



IMX2020

ROOTED IN TRADITION

/ PROPELLED BY *growth*

MAY 18-20, 2020 | ST. LOUIS, MO | THE DOME @ AMERICA'S CENTER

REGISTRATION BROCHURE | inlandmarineexpo.com



Lexie Palmore, 1st woman grad
of National River Academy, With
Capt. CS Ware on Delta Queen



2018 IMX Achievement Award
Winner Bruce Gibson



Follow **@InlandMarineExpo** for #throwback content you won't want to miss.



ROOTED IN TRADITION

/ PROPELLED BY *grit*



Celebrating Our History, Supporting Our Future.

The Inland Marine Expo is focused on honoring the brown water community's rich history and providing the modern workforce with the tools, education and inspiration it needs to propel forward. #IMX2020 is presented by *The Waterways Journal* and is designed specifically for the inland and intracoastal commercial marine transportation industry. From CEOs to deckhands, this annual event is for the whole team. Registration is now open. There are no hidden fees. Attendee registration includes:

200+ Exhibitors • 13 Expert-Led Education Sessions • Hands-On Product Demos


Exclusive Networking Events • Official IMX Party @ Ballpark Village • Special Offers and Discounts

Awards Breakfast • State of the Industry Keynote • Line Throwing Course and Competition

MAY 18-20, 2020 | ST. LOUIS, MO | THE DOME @ AMERICA'S CENTER

Register online at inlandmarineexpo.com ▶

IMX is produced by
the **WATERWAYS**
JOURNAL
Weekly

MONDAY, MAY 18	8:00 AM - 4:30 PM	Exhibitor Move-in
	8:00 AM - 1:00 PM	Private Meetings
	2:00 PM - 2:45 PM	<div>Pre-Conference Sessions</div> <ul style="list-style-type: none">❖ Washington Waves – News and Important Updates From the Hill❖ HIGH WATER – 2019 Historic Flooding in Review and What’s Next❖ Adding Tonnage to the System – Bi-State and Missouri River Port Initiatives
	3:00 PM - 3:45 PM	
	4:00 PM - 4:45 PM	
	5:00 PM - 6:00 PM	Welcome Reception
TUESDAY, MAY 19	8:00 AM - 9:30 AM	Exhibitor move-in
	7:30 AM	Continental Breakfast
	8:00 AM	❖ Opening Session: State of the Industry with 2020 Barge and Towboat Fleet Profile
	9:00 AM - 5:00 PM	Exhibit Hours
	9:30 AM - 10:15 AM	❖ Under the Surface – Diving, Underwater Welding and Inspection of Waterfront Facilities
	9:30 AM - 10:15 AM	❖ Diesels – Tier 4, Supply Chain and What’s Next
	10:15 AM - 10:30 AM	Product Demo
	10:30 AM - 11:15 AM	❖ Marine Equipment Financing
	10:30 AM - 11:15 AM	❖ Subchapter M Part 1 – Lesson’s Learned
	11:30 AM - 11:45 AM	Product Demo 
	11:30 AM	Maritime Throwdown Qualifier 
	12:00 PM - 12:45 PM	Lunch
	1:00 PM - 1:15 PM	Product Demo 
	1:30 PM - 2:15 PM	❖ Hybrid Engines and Diesel Electric Technology
	1:30 PM - 2:15 PM	❖ Skiff Operations on Major Waterways – Reducing Risk
	2:30 PM - 2:45 PM	Product Demo
	3:00 PM - 3:45 PM	❖ Vessel and Facility Security – Cyber Security plus TWIC Evaluation
	3:00 PM - 3:45 PM	❖ Innovations in Vessel Design and Construction
	4:00 PM - 5:00 PM	Happy Hour 
	5:30 PM - 7:00 PM	IMX Party
	6:30 PM	ERL 50th Anniversary Party 
WEDNESDAY, MAY 20	7:30 AM	Continental Breakfast 
	8:00 AM	❖ Celebration of Mariners with 40 Under 40 and the IMX Achievement Awards 
	9:00 AM - 2:00 PM	Exhibit Hours
	9:00 AM	Bloody Mary Bar 
	9:00 AM	Coffee Break 
	9:30 AM - 10:15 AM	❖ Today’s Mariner: Finding New Talent and Continued Education
	10:15 AM - 10:30 AM	Product Demo 
	10:30 AM - 10:45 AM	Product Demo
	11:00 AM - 11:45 PM	❖ Subchapter M Part 2 – Cost Considerations and General Q&A with Shipyard Perspective
	12:00 PM	Happy Hour 
	12:00 PM	Maritime Throwdown Final Competition & Lunch  
	2:00 PM	Exhibitor Move-out
THURS, MAY 21	10:00 AM	Golf Outing at Annbriar Golf Course 
	11:30 AM - 1:30 PM	Ag Coast of America Riverboat Cruise 

/ NEW TO IMX2020

PRE-CONFERENCE *sessions*

Plan to attend IMX Pre-conference Sessions on the afternoon of Monday, May 18, followed by the Welcome Reception!

TUESDAY, MAY 19 | 8:00 AM

Informa Economics IEG 



State of the Industry with 2020 Barge and Towboat Fleet Profile

What is the outlook for barge and towboat supply and demand for 2020, given recent industry consolidations, the increasing move away from domestic coal use, the modified trade agreements with China, and other economic factors? Ken Eriksen and other experts will explore current conditions of the barge and towboat fleet, as well as how things look for the second half of 2020.

WEDNESDAY, MAY 20 | 8:00 AM

Celebration of Mariners with 40 Under 40 and the IMX Achievement Awards

Join us as industry professionals are recognized for their service and leadership to the inland waterway community.



Achievement Award

For the seventh year, the Inland Marine Expo and *The Waterways Journal* are accepting nominations for the IMX Achievement Award. The goal of the award is to recognize individuals who have spent their career making significant contributions to the maritime industry by helping it to be the most cost-efficient, safe and environmentally friendly mode of transportation for many cargoes. The winner, along with the person who nominated him or her, will receive free registration to the 2020 Inland Marine Expo, where they will also be invited to a special recognition ceremony.



40 under 40 Awards

For its third year, the Inland Marine Expo is accepting nominations for 40 men and women under the age of 40 who have made outstanding contributions to the inland marine transportation industry in a variety of fields. Those who are selected as an IMX 2020 40 Under 40 professional, along with the person who nominated him or her, will receive free registration to the 2020 Inland Marine Expo, where they will also be invited to a special recognition ceremony.

/ AWARD *nominations*

DUE BY MARCH 18, 2020 | INLANDMARINEEXPO.COM/40-UNDER-40-AWARD/

IMX2020 / *networking and events*



The Crown Room at Ballpark Village

IMX2020 **/ PARTY**

@ *ballpark village*

Tues, May 19 • 5:30-7 pm

Be part of #CardinalsNation and watch St. Louis take on the Atlanta Braves in the exclusive Budweiser Crown Room in Ballpark Village. There will be plenty of food, beer and networking.

NETWORK @ IMX2020

Catch up with brown water friends and connect with new river industry players at official IMX networking events.



WELCOME RECEPTION | TRADE SHOW FLOOR

Mon, May 18 • 5-6pm: Immediately following the Pre-Conference Sessions, kick-off IMX with a toast to a great week with friends.

HAPPY HOUR | TRADE SHOW FLOOR



Tues, May 19 • 4-5pm / Wed, May 20 • 12pm: Talk business over a beer (or two) and close out the day.

BLOODY MARY BAR | TRADE SHOW FLOOR



Wed, May 20 • 4-5pm: The signature IMX Bloody Mary Bar is back by popular demand.

IMX GOLF OUTING | ANNBRIAR GOLF COURSE




Thurs, May 21 • 10am: Organize a foursome for this post-expo scramble golf event scheduled to kick off shotgun-style at 10 am. Costs are \$640 per foursome (covers a round of golf, cart rental, lunch, dinner and chances to win cash prizes.) Visit inlandmarineexpo.com/golffouting for further info.

FREIGHTWEEK STL 2020

Now in its third year, the St. Louis Regional Freightway is partnering with Inland Marine Expo (IMX). The week will include a number of panel discussions that highlight the St. Louis region's standing as the second largest inland port system and third largest rail hub in the nation.

The FreightWeek STL 2020 lineup will feature a number of sessions and events that spotlight the Ag Coast of America including the St. Louis region's role in addressing global food shortages through nationally and internationally recognized ag tech research, ag production and transportation. These efforts are supported by an industrial real estate market that is capitalizing on the food industry and just-in-time delivery.

AG COAST OF AMERICA RIVERBOAT CRUISE

Thurs, May 21 • 11:30am–1:30pm 

This riverboat tour on the Mississippi River will highlight key freight assets and opportunities that position the St. Louis region as a global freight and logistics hub. The curated tour will provide an up-close look at critical elements of the region's multimodal freight network, including roads and bridges; rail and barge facilities; multimodal freight transfer services; and the ports and infrastructure that have made this section of the Mississippi River the Ag Coast of America. Lunch onboard the riverboat is included in the tour. Space is limited. Separate registration is required. For more information, contact, FreightWeekSTL@TheFreightway.com

LINE THROWING COMPETITION

MTD Qualifier – Tues, May 19 • 11:30am | Exhibit Floor
MTD Finals – Wed, May 20 • 12pm | Exhibit Floor

We're proud to partner with Maritime Throwdown to co-host the 2020 Maritime Throwdown Finals at IMX2020. The Maritime Throwdown summons mariners from across the industry for a 3-event battle of skills, endurance, excellence and safety. Winners walk away with thousands of dollars in prizes, including a brand new 4x4 ATV provided by Inland Marine Services, along with a sense of pride in their craft. Companies, find your best of the best to represent your colors and bring back the coveted MTD traveling trophy!

PRODUCT DEMOS

Plan to attend product demos, which will take place on the tradeshow floor at select exhibitor booths. If you are interested in showcasing your product or service, please contact Susie Jensen at 314-561-4706 or susie@wjinc.net.



IMX2020

/ POST-PARTY

BALLPARK VILLAGE ROOFTOP | MAY 19

After the IMX Party, continue to network with fellow expo attendees while watching the Cardinals take on the Braves from the Budweiser Brew House roof top deck. Tickets are limited. Stay tuned to find out how to score tickets to the ERL/IMX2020 Post-Party.

presented by

50
YEARS
1970 - 2020

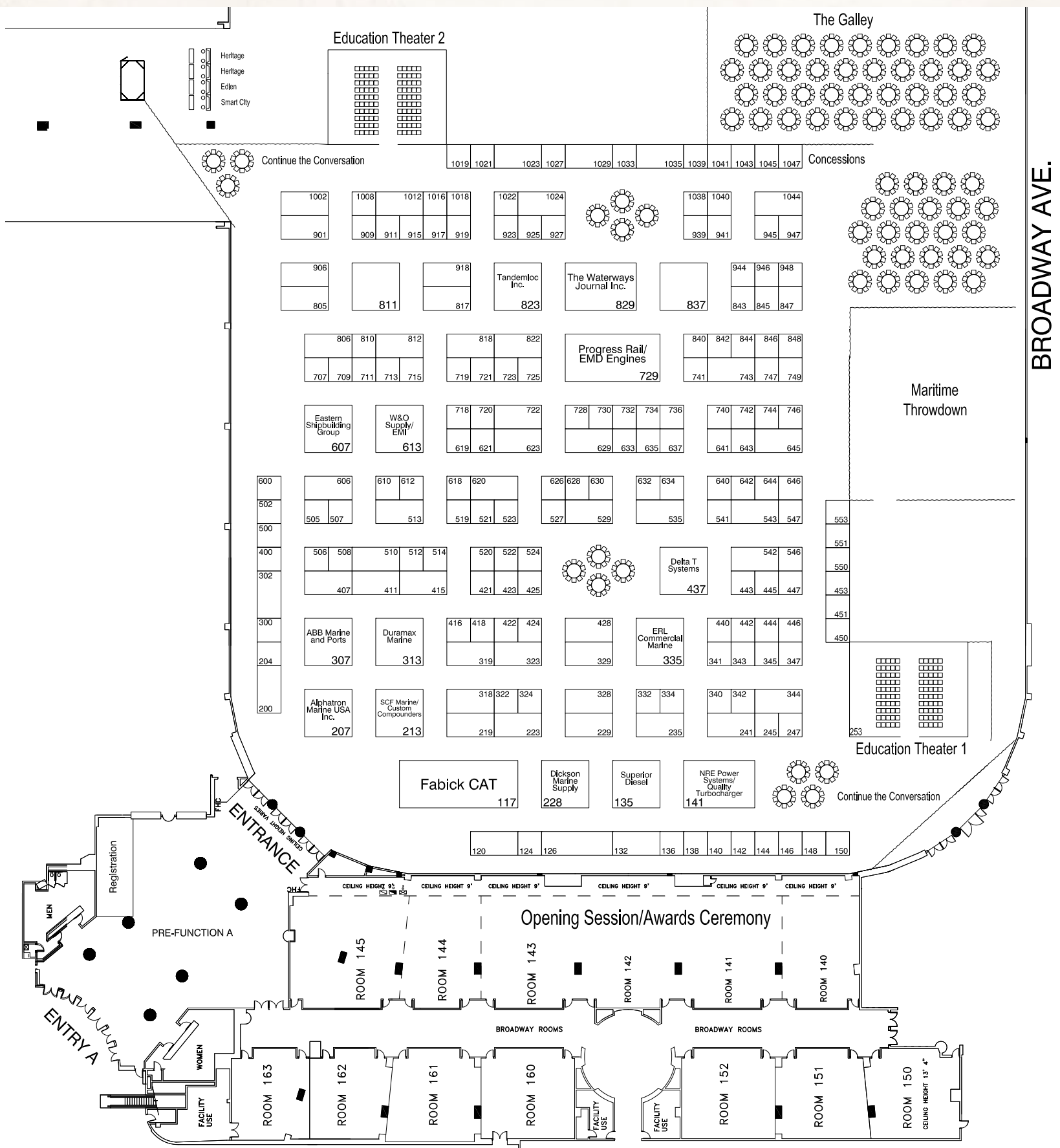


**ERL COMMERCIAL
MARINE INC.**



EXHIBITOR.....	BOOTH	EXHIBITOR.....	BOOTH	EXHIBITOR.....	BOOTH	EXHIBITOR.....	BOOTH
ABB Marine & Ports	307	Electro Plastics Inc./Step Marine.....	553	Master Marine, Inc.	343	Schuyler Companies	743
ABS Nautical Systems.....	423	Elite Health.....	730	Master Packing & Rubber Co.....	443	Scienco-FAST	422
AEP Sales, LLC	302	EMI.....	613	Maxim Silencers.....	822	Scurlock Electric.....	749
AEU LEAD	746	Empire Foam Solutions, LLC.....	146	McDermott Light & Signal	523	Sea Horse Systems, LLC	300
Aftton Radiator.....	342	Engines Inc.	805	MER Commercial Diving Division	550	Sea Ready Marine Petroleum	150
Alphatron Marine USA, Inc.....	207	Environmental Restoration, LLC.....	341	Michigan Wheel	502	Seafloor Systems Inc.....	742
American Chemical Technologies	939	ERL Commercial Marine	335	Midwest Foundation	522	Seal Smart, LLC	944
American Refining Group	150	F&M Mafco.....	535	Mike's Inc.	415	Sennebogen, LLC	644
American Turbocharger Technologies.....	810	Fabick CAT.....	117	MobileOps	743	Separator Spares & Equipment, LLC.....	416
American Vulkan Corporation	334	Flexicrew Technical Services.....	1021	Moxie Media	736	Shell Marine.....	444
American Waterways Operators.....	844	Fluid Power Energy	144	MTU	219	Sherwin-Williams	817
Anvil Attachments	204	Foertsch Group	818	NABRICO	513	ShipConstructor USA Inc.....	1027
Archway Marine Lighting.....	506	Fuel Masters, LLC	846	NAG Marine	713	Ships Machinery International.....	641
Arcosa Marine.....	925	Furuno USA Inc.	520	National Maintenance & Repair Inc.	612	Signal Mate.....	709
Atlas Marine Services, LLC.....	947	GEMS Sensors & Controls	606	National Speciality Alloys, Inc.	911	Simrad - Navico	132
AZEK Building Products.....	845	Glendinning Products, LLC	345	Nautican Research and Development Ltd....	247	Sinex Solutions.....	721
BAE Systems	241	Global Data Systems	245	Nauticomp Inc.....	1033	Smith LaSalle Inc.....	842
Belzona/Rumford Industrial Group	633	Great Lakes Power	140	Newt Marine Service.....	626	Solberg Crankcase Ventilation Systems.....	332
Big River Shipbuilders Inc.	837	H&E Equipment Services	740	Northern Lights Inc.....	445	Sound Propeller Services, Inc.....	347
Bludworth Marine, LLC.....	446	Haley Marine Gears.....	507	Northern Safety & Industrial.....	425	Standard Calibrations, Inc. (SCI)	606
Boksa Marine Design, Inc.	707	Heartland Barge.....	514	NRE Power Systems.....	141	Stanley Parts & Equipment Co., Inc.....	328
Bollinger Shipyards.....	1035	Helm Operations	529	On Site Alignment	635	Sterling	124
Britmar Marine LTD	551	Hilb Group of Florida, LLC.....	847	Osborne Propellers Ltd.....	546	Superior Diesel.....	135
Carboline Company.....	418	HMC Gears	400	Paducah CVB.....	747	Superior Industries	505
Christie & Grey Inc.....	719	Howell Tractor and Equipment, LLC.....	442	Paducah Rigging	411	Superior Marine Ways, Inc.	806
CIS Rigging	619	Humco Marine Products.....	200	Palmer Johnson Power Systems	344	Tandemloc Inc.....	823
CK Power.....	120	Imtra Corp.....	329	Panolin America Inc.....	720	Tech Development (TDI).....	138
Columbia Industrial Products.....	741	Ingram Sheet Metal, Inc	812	Pass Security	318	Teufelberger Fiber Rope Corporation.....	500
ComMar Sales, LLC	428	Inland Logistics & Marine Institute	941	Phoenix Lighting.....	744	The Hiller Companies	629
Conrad Shipyard	547	ioCurrents.....	1038	Polaris Laboratories.....	843	The Shearer Group Inc.	927
Controlled Water Systems, Inc.	527	J.F. Brennan Company Inc.	235	PPG	711	Thoma-Sea Marine Constructors LLC	508
CTEH (Center for Toxicology & Environmental Health, LLC)	524	Jefferson County Port Authority.....	1043	Precision Scale & Controls Inc	324	Thordon Bearings Inc.	643
Cummins Inc.....	126	Kahlenberg Marine.....	323	Progress Rail -- EMD Engines	729	Thrustmaster of Texas, Inc.....	1023
Custom Compounders	213	Karl Senner LLC.....	229	PYI Inc.....	642	Timco Industries.....	632
DataTronics.....	840	Kent Safety	621	Quality Maritime Training	512	Towing Vessel Inspection Bureau (TVIB)	919
Datrex, Inc.....	600	Koden/Si-Tex	447	Quality Turbocharger	141	TowWorks, LLC.	732
Deansteel Mfg. Co. Inc.	917	Kohler Power Systems	407	R.W. Fernstrum & Company	340	Triangle Enterprises, Inc.....	725
Delta T Systems Inc.....	437	Laborde Products, Inc.....	510	Rampstop Marine Services Inc	450	Tug and Barge Solutions Inc.	734
Dickson Marine Supply.....	228	LeBlanc & Associates, LLC	416	RECO Equipment Inc.	451	Twin Disc	344
Dometic Corporation	421	Liebroc Industries.....	223	Rexnord	715	Unipar, LLC	646
Donaldson Company, Inc.	640	Lubriplate Lubricants Co.....	634	Rice Nozzles.....	923	Veth Propulsion	628
Donovan Marine.....	323	Lucas Oil Marine Products.....	620	River Diving & Salvage, Inc.	610	Voith Turbo	453
Donovan Marine.....	319	Lufkin GE.....	728	Riverways Mobile Solutions	1039	W & O Supply	613
Driveline Service of Portland Inc.....	521	Mactech, Inc.	645	RiverWorks Discovery.....	946	Wager Company	637
Duramax Marine	313	MAGNA Lifting Products Inc.....	1019	Rose Point Navigation Systems.....	541	Waterways Journal.....	829
E3 Environmental	630	Mantsinen Group	623	Rustibus Inc.	322	Wintech International.....	618
Eastern Shipbuilding Group	607	Marine Diagnostic Tools.....	1047	Sabine Surveyors, Ltd.....	718	Wood Resources, LLC	848
E-Crane International USA, Inc.....	440	Marine Solutions, Inc.	723	Scania USA.....	142	WorkBoat.....	945
Economy Boat Store.....	148	Marine Travelift.....	319	SCF Marine.....	213	Yager Marine Industries.....	519
Effer Distributed by Altec	722	MarineNet LLC.....	543	Schoellhorn-Albrecht Machine Co. Inc.	1029	ZF Marine Propulsion Systems	136
		Maritime Partners, LLC.....	542	Schottel, Inc.	424		

floor plan / IMX2020



BROADWAY AVE.

IMX HEADQUARTER HOTEL

① **MARRIOTT ST. LOUIS GRAND**

314-621-9600 | 800 Washington Ave, St. Louis, MO 63101 (Adjacent to America's Center Convention Complex)

With a stay at Marriott St. Louis Grand, you'll be centrally located in St. Louis, steps from America's Center Convention Complex and 5 minutes by foot from Dome at America's Center. This 4-star hotel is 0.5 mi (0.9 km) from Busch Stadium and 0.6 mi (1 km) from City Museum.

② **EMBASSY SUITES ST. LOUIS – DOWNTOWN** 314-269-5900 | 610 N 7th St, St. Louis, MO 63101 (Adjacent to America's Center Convention Complex)

The hotel offers 212 two-room suites with a wet bar, mini-refrigerator and microwave, plus televisions in both the bedroom and living room. Other hotel amenities include a business center, indoor pool and whirlpool, fitness center, complimentary cooked-to-order breakfast and evening reception, and atrium restaurant and lounge.

③ **HOLIDAY INN ST. LOUIS – DOWNTOWN CONVENTION CENTER** 314-421-4000 | 811 N 9th St, St. Louis, MO 63101 (Adjacent to America's Center Convention Complex)

The Holiday Inn Hotel in Downtown St. Louis is located in the heart of downtown Saint Louis, next to America's Center and Dome, one block from St. Louis' newest expansion area "Washington Avenue." It features unique dining, shopping boutiques and entertainment, and only nine blocks from Busch Stadium, home of the St. Louis Cardinals and Ballpark Village!

④ **COURTYARD ST. LOUIS DOWNTOWN/ CONVENTION CENTER** 314-269-5900 | 827 Washington Ave, St. Louis, MO 63101 (Adjacent to America's Center Convention Complex)

Reflecting the vibrant character of the city, Courtyard St. Louis Downtown/Convention Center features a blend of contemporary style and historic touches. Located adjacent to America's Center and Dome, our hotel places you within steps of endless shops, restaurants and entertainment. When you step into our rooms after a day of meetings or memory making, kick back with many modern comforts.

⑤ **DRURY INN & SUITES ST. LOUIS CONVENTION CENTER** 314-231-8100 | 711 North Broadway, St. Louis, MO 63102 (Adjacent to America's Center Convention Complex)

Drury Hotels carefully renovated the Union Market building in 1990, adding two additional stories for guest rooms. Built in 1925, original features were preserved in the hotel lobby and mezzanine meeting level. Only blocks from the Convention Center, the Drury Inn & Suites St. Louis Convention Center is walkable from downtown attractions and Washington Avenue entertainment.

⑥ **HOTEL SAINT LOUIS** 314-241-4300 | 705 Olive St., St. Louis, MO 63101

Housed in the former Union Trust Company building, Hotel Saint Louis embodies the spirit of the city for which it is named. The 1st Marriott Autograph Collection Hotel in St. Louis, this new hotel is located in downtown blocks from The Dome @ America's Center.



Please make your reservation directly with the hotel(s). Call and ask for the Inland Marine Expo room block or reserve online by visiting inlandmarineexpo.com

ATTEND

LEARN AND *network*

WHAT’S INCLUDED IN YOUR REGISTRATION

- 200+ Exhibitors • 13 Expert-Led Education Sessions • Hands-On Product Demos
Exclusive Networking Events • Official IMX Party @ Ballpark Village • Special Offers and Discounts
Awards Breakfast • State of the Industry Keynote • Line Throwing Course and Competition

REGISTRATION TYPE	BY APRIL 27	AFTER APRIL 27
Attendee/Buyer	\$90	\$135
Non-Exhibiting Supplier	\$240	\$285
Additional IMX Exhibitor Badge	\$240	\$285

REGISTER AT INLANDMARINEEXPO.COM

Please email or call Jen Hoeferlin with questions – jhoeferlin@wjinc.net / 314.446.4905

THANK YOU TO OUR *sponsors*



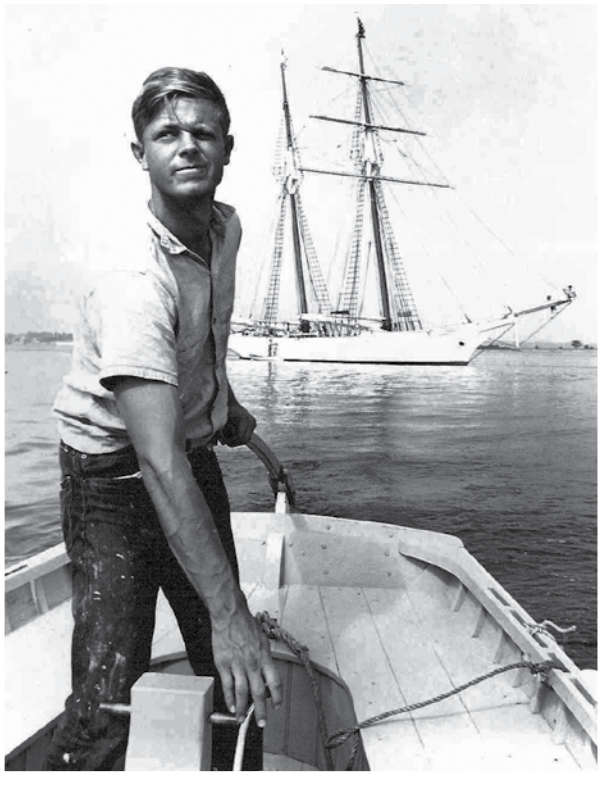
ERL COMMERCIAL MARINE INC.



SIMPLEX AMERICAS



The Waterways Journal
319 N. 4th St., Ste. 650
St. Louis, MO 63102



IMX2020

MAY 18-20 | ST. LOUIS

/

REGISTRATION

now open